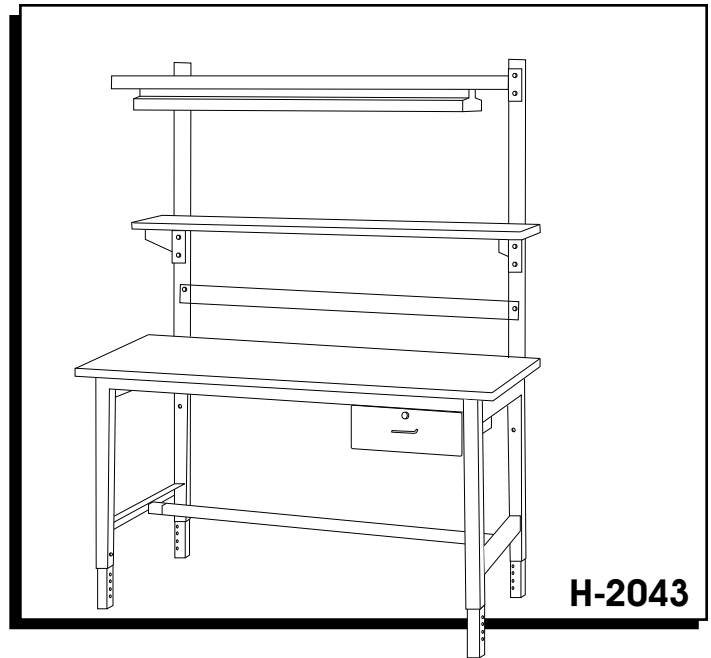


**ULINE** H-2043

**ANTI-STATIC  
WORK BENCH**

1-800-295-5510

uline.com



## ASSEMBLY INSTRUCTIONS

### STEP 1: FRAME ASSEMBLY AND TOP ASSEMBLY (PART BAG A7163HD BASE)

1. Assemble front and back rail using stud plates provided making sure the holes in rails are facing up. (Before tightening nuts make sure the front rail and back rail are flush to the top of the leg assemblies and pushed inward approximately  $\frac{1}{8}$ " to allow the work surface to be mounted properly). The 2 x 2 x 1 channel is for the front of the unit and the 1 x 8 channel is for the back. Attach the  $\frac{1}{4}$ " x  $\frac{3}{4}$ " hex head bolt and flat washer to the lowest hole in the back rail.
2. Attach leg extender into leg and place bolt assembly as shown and tighten.
3. Place work surface bottom up on a protected surface, to protect laminate from scratches, and place assembled frame on top making sure to line up flush with the back edge of the leg. Screw  $\frac{3}{4}$ " screws into predrilled holes fastening the top to the frame.



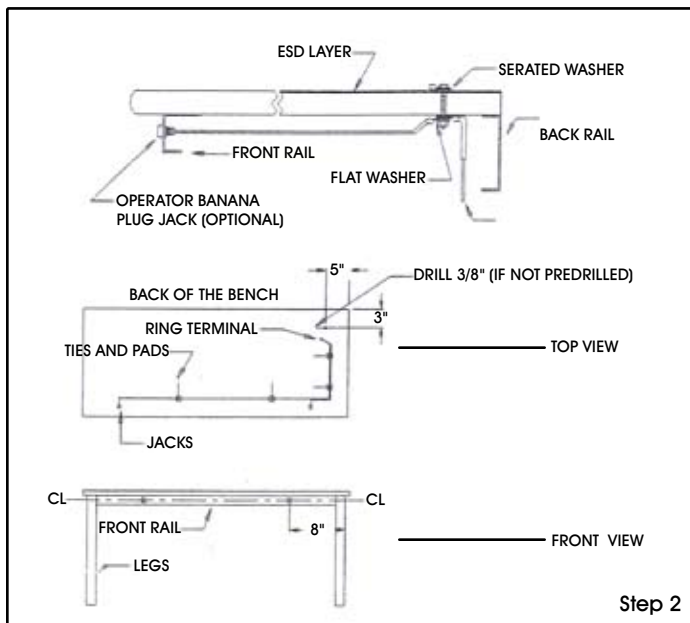
**NOTE:** Overhang of the top should be approximately 2" in the front and sides.



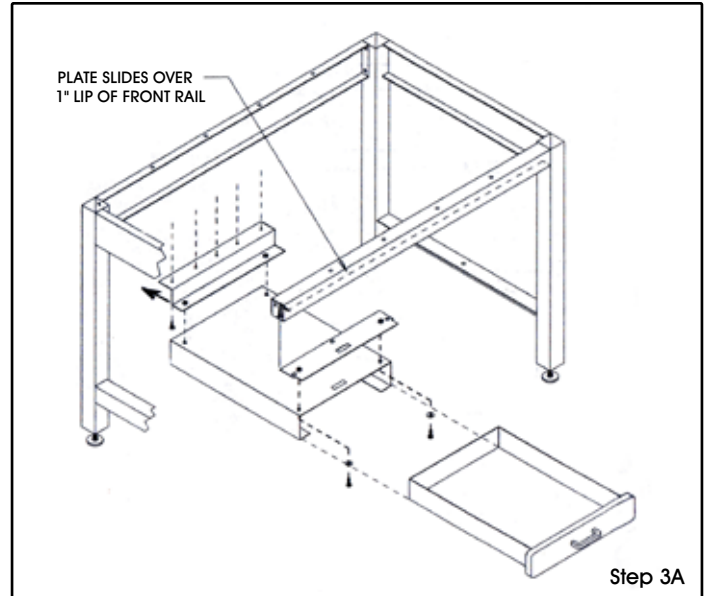
## ASSEMBLY INSTRUCTIONS (CONTINUED)

### STEP 2: WIRING TABLE TOP (LARGE PLASTIC BAG)

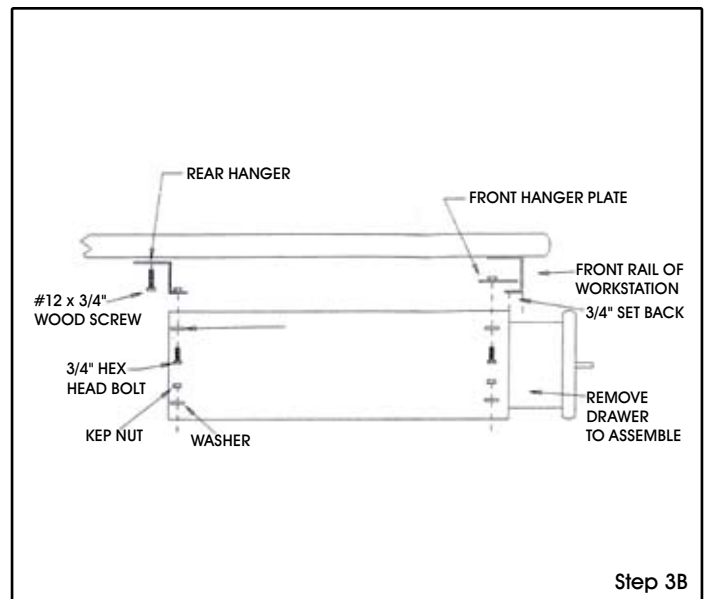
1. Install  $\frac{5}{16}$ " x  $2\frac{1}{2}$ " hex head bolt through predrilled hole in table top in the following sequence. Top of table should be ring terminal and serated washer. Underside of table install washer, prewired ring terminal, washer, ring terminal, washer, and nut in this order and tighten.
2. Mount jacks into front rail using nuts provided.
3. Run wires in manner shown using wire ties and stick pads.
4. Pull wires towards the ring terminal and cut to appropriate length leaving approximately 1-2" slack. Strip wires  $\frac{1}{4}$ " and install the ring terminal by crimping both exposed wires at the same time.



Step 2



Step 3A



Step 3B

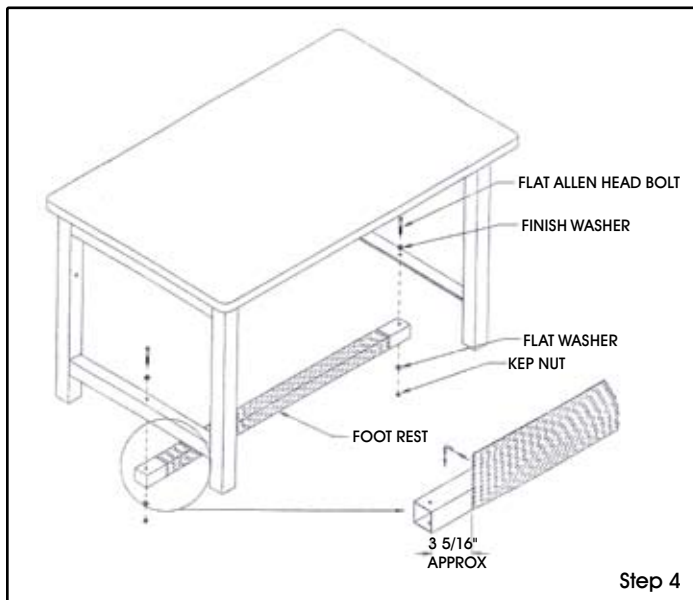
### STEP 3: DRAWER ASSEMBLY (PART BAG HK MDS/POW/DP-1-HD/CHD)

1. Remove drawer from housing.
2. Mount brackets to housing using  $\frac{1}{4}$ " x  $\frac{3}{4}$ " hex head bolt and washers as shown. Tighten bolts on rear bracket, but leave bolts on front plate loose.
3. Flip table upside down.
4. Set drawer housing a minimum of 1" from the leg and  $\frac{3}{4}$ " set back from front rail.
5. Install five phillips pan head screws through the rear bracket into the bottom of work surface. Finally tighten hanging plate to secure drawer to the frame.

### STEP 4: FOOT REST ASSEMBLY (PART BAG HD/TT A7001/A7270)

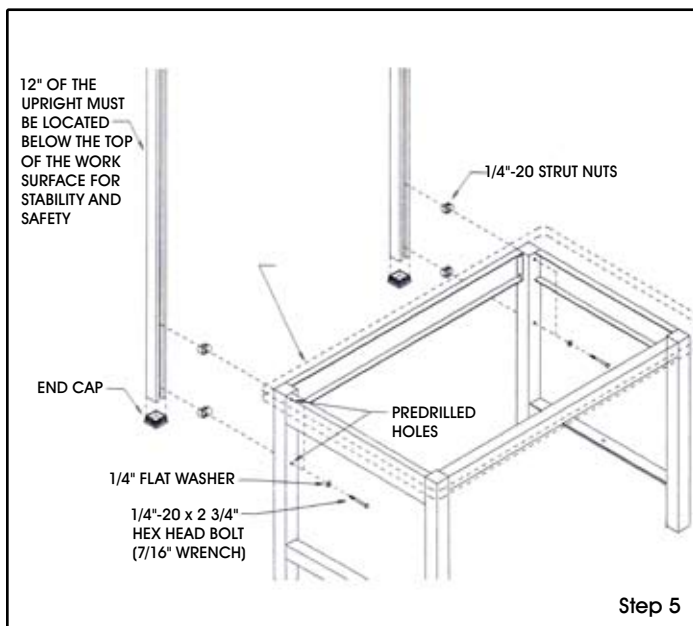
1. Peel wax backing off adhesive side of foot rest guard tape.
2. Center foot guard tape along the length of foot rest as shown. Firmly press tape to foot rest working your way around. It is recommended to use a wood block to help smooth and adhere foot guard tape.
3. Assemble foot rest as shown using  $\frac{1}{4}$ " x  $2\frac{1}{4}$ " flat allen head bolt, finish washer, flat washer, and kep nuts provided.

## ASSEMBLY INSTRUCTIONS (CONTINUED)



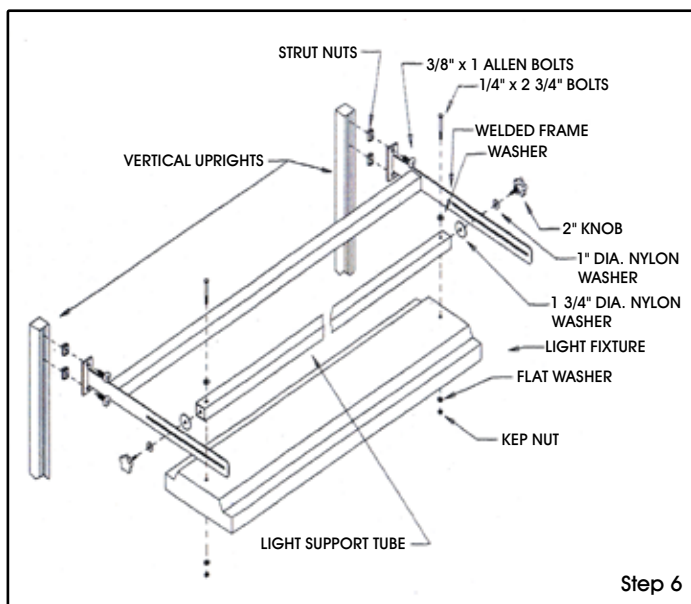
### STEP 5: SHELF EXTENSION ASSEMBLY (PART BAG A7164/A7265)

1. Mount  $\frac{1}{4}$ " x  $2\frac{3}{4}$ " hex head bolts through rear legs as shown.
2. Turn  $\frac{1}{4}$ " strut nuts on approximately two threads.
3. Hold extensions against back of rear legs and push strut nuts into extensions and turn clockwise to tighten. (12" of the upright must be located below the work surface for stability and safety).
4. Repeat steps on other side to complete.



### STEP 6: LIGHT ASSEMBLY (PART BAG OLF A7078)

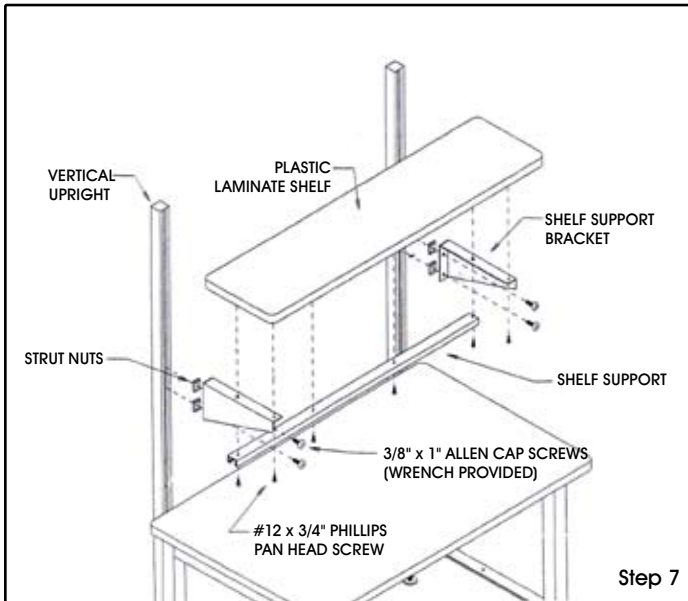
1. Attach light fixture to light support as shown with  $\frac{1}{4}$ " x  $2\frac{3}{4}$ " long bolts, flat washers, and kep nut.
2. Attach the light frame to the extensions using the  $\frac{3}{8}$ " x 1" allen head bolts and strut nuts.
3. Assemble light support to light frame using the 2" knobs and washers as shown.



### STEP 7: SHELF ASSEMBLY (PART BAG A7042/A7183)

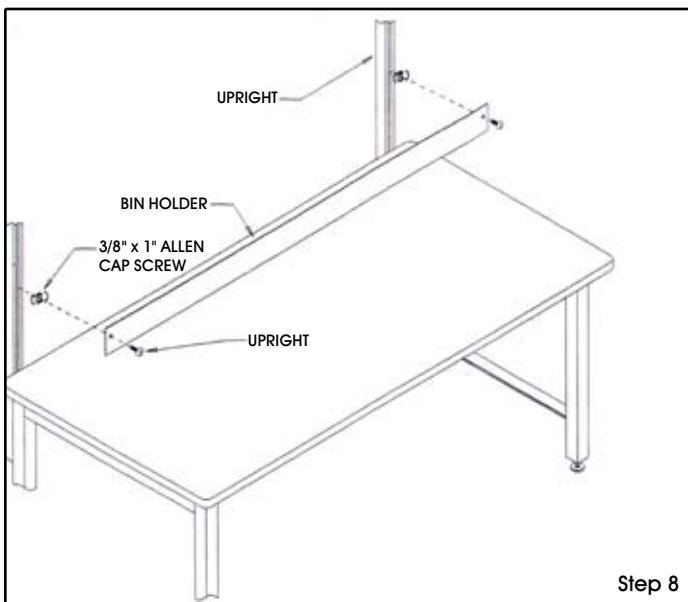
1. Choose desired height on extensions and mount shelf brackets using  $\frac{3}{8}$ " x 1" allen cap bolts and strut nuts provided.
2. Lay laminate shelf on brackets with equal overhang on each side.
3. Install  $\frac{3}{4}$ " phillips pan head screws into shelf support to secure the shelf (Two people recommended). Install remainder of screws to secure shelf to shelf support.

## ASSEMBLY INSTRUCTIONS (CONTINUED)



### STEP 8: BIN HOLDER ASSEMBLY (PART BAG A7449/A7147/A7148/A7156)

1. Fasten bin holder to extensions at desired height using  $\frac{3}{8}$ " x 1" allen cap screws and  $\frac{3}{8}$ " strut nuts as shown.



### STEP 9: ELECTRICAL STRIP ASSEMBLY (PART A7043/A7172/A7184)

1. Fasten the electrical strip mounting rail to the extensions with  $\frac{3}{8}$ " x 1" allen cap screws and  $\frac{3}{8}$ " strut nuts.
2. Secure the electrical strip to the mounting rail as shown using  $\frac{6}{32}$ " x  $\frac{3}{8}$ " round head machine screws and  $\frac{6}{32}$ " hex nuts.

